



Wiper Specification and Order Form

Rome Truck Parts, Inc.

241 Dempsey Road Rome, GA 30161

Info@RomeTruckParts.com

(800)284-4345 (706)234-6292 (fax)

Customer Name: _____ Name of Contact: _____

Address: _____

City: _____ State: _____ Zip: _____

Make of Vehicle: _____ Year: _____ Model: _____

Wiper System Required:

Air: _____ Electric: _____ (Please indicate 12 or 24 volt)

Arms required: Arc: _____ Pantograph: _____

Driver Side LH: _____ Driver Side RH: _____

Single Motor: _____ Dual Motor: _____

Park: _____ Park _____ (CW or CCW)

Washer System Required (Part #): _____ Air: _____ Electric: _____

Wet Arm Nozzle: _____ Thru-Skin Nozzle: _____

Wiper Control Required (Part #): _____

Rocker Switch: _____ Rotary Switch: _____ Intermittent Control: _____

Wash Feature: _____

Alternator Output Voltage (Factory set Range): _____

Estimated Voltage Drop (At Wiper Motor): _____

Wiring Harness: Wire Type: _____ Gauge: _____

Approx. Length: _____

Fuse/Breaker (Manufacturer & Type): _____

Terminals & Connector (Manufacturer's Part #) Standard Wire Termination per ERD1-61:

Internal Overload Protection Req'd: _____

RFI/EMI Req'd (Noise Suppression): _____

Comments:

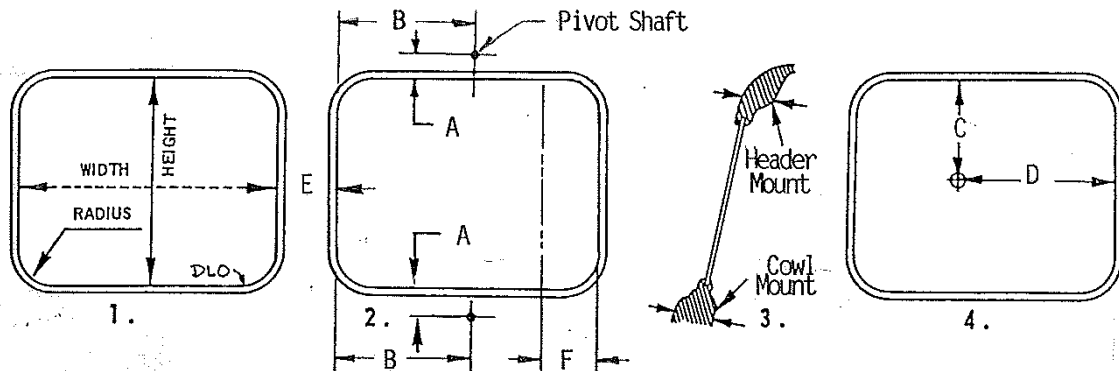
Specifications:

Special Requirements:

(Weather Protected, 3-Wire Modification, Reverse Polarity, Etc.)

WINDSHIELD AND MOUNTING DIMENSIONS

(Specify in Inches)



1. Exact dimensions of windshield glass (inside molding)

Height: _____ Width: _____ Radius: _____

Single Piece Windshield: _____ Multi-Piece Windshield: _____

Flat Glass: _____ Curved Glass: _____

2. Location of attachment hole/Pivot shaft:

Header Mount (Top): _____ Cowl Mount (Bottom): _____

Other Location: _____ Pivot Mounting Hole Diameter: _____

A- Distance from edge of glass (inside molding) LH _____ RH _____

B- Distance from edge of glass (inside molding) LH _____ RH _____

3. Thickness of mounting surface at point of shaft attachment: _____

Outer Skin Material (Steel, aluminum, fiberglass, etc.) _____

4. Centerline of Driver's Vision:

C- Vertical distance from top edge of glass (inside molding): _____

D- Horizontal distance from outside edge of glass (inside molding): _____

5. Additional information:

E- Width of center molding (pillar): _____

F- Dimension to start of outboard curve: _____